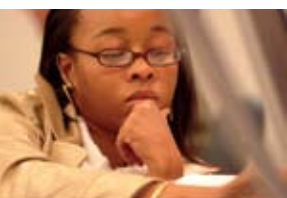


WASHINGTON AND LEE UNIVERSITY
SCHOOL OF LAW



PATHWAYS

W&L
LAW




MEGHAN MORGAN

{ Class of 2005 }

After receiving her Political Science degree from the University of Tennessee, Meghan Morgan chose Washington and Lee Law to pursue her legal career.

“I feel that my experience at W&L has helped me to develop the work ethic to succeed in the practice of law, the social atmosphere to remember that life isn't all about work, and has given me the opportunity to give back to the community,” said Meghan.





*Do not go where the path may lead;
go instead where there is no path,
and leave a trail.*

- RALPH WALDO EMERSON

P A T H W A Y S

M

any people embark on the same path, but no one ever takes the same journey. Trail and traveler evolve with every stride, every moment. Every step takes a trekker closer to one point...further from another. The traveler leaves his mark on the trail...just as the journey leaves its mark on the traveler. Every intersection is an opportunity for an experience...every experience can be a conduit for growth.

“We are the only national law school that commits to teaching law through a liberal arts model of education. Our broad and energetic curriculum includes courses from the entire spectrum of legal specialties; our commitment to accessibility means you can really work on your legal writing and rigorous theoretical thinking. W&L Law offers all the pluses of a national curriculum in a place that prides itself on getting to know you.”

Mark A. Drumb
Associate Professor and
Ethan Allen Faculty Fellow

Washington and Lee School of Law stands proudly as something of a deviation from the norm. It is a school comprised of some of the brightest and most competitive young minds in America...yet it is a place with a permeating sense of camaraderie and community.

We are continuously refining an educational process calculated to deliver to each student the challenges and guidance necessary to succeed in the classroom and in professional life.

Washington and Lee is more than a road to a degree in law. It is a path along which you'll come to understand that there truly is such a thing as a W&L lawyer: highly educated, critically trained, fully engaged, and bound by a code of honor. It is a path to a place in the elite coterie of W&L Law graduates.





HEATHER CURLEE
[Class of 2007]

Heather Curlee had her pick of eight top-tier law schools, but decided to start her journey at Washington and Lee.

“Washington and Lee doesn't just say they really care about the students. They actually back it up. I have met a wide group of friends who have been positive influences in my development. We support one another and bond in ways other laws schools simply do not promote.”

RELATIONSHIPS

Students come to law school with all kinds of expectations. You may be apprehensive about the Socratic method, considering what area of law you'll specialize in, and contemplating where you'll find a job. You'll quickly discover that, as important as these concerns are, they won't define your three years at W&L.

What will impress you most are the relationships you'll form while you're here. Your experiences with classmates, professors, and the community will become a part of who you are.



SAMPLING OF CLUBS & ACTIVITIES

- Asian-Pacific American Law Society
- American Bar Association, Law Student Division
- American Constitutional Law Society
- Black Law Students Association
- Christian Legal Society
- Democratic Society
- Environmental Law Forum
- Federalist Society
- International Law Society
- Jewish Law Students Association
- Law Rugby Football Club
- Law School Outing Club
- Moot Court Board
- National Lawyers Guild
- Outlaw
- Phi Alpha Delta
- Phi Delta Phi
- Pro-Bone-O
- Public Interest Law Students Association
- *Res Ipsa*, the law school yearbook
- Sports and Entertainment Law Society
- Women Law Students Organization
- *W&L Law News*

You'll join a wonderfully diverse student body. You'll meet students from large public universities and small private colleges, peers who've come directly from undergraduate school, and those called to the law a little later in life.

Our small class sizes allow you to develop strong and meaningful relationships with members of the faculty. You'll find that our professors are teachers in the finest and most uplifting sense of the word – their doors are open not as a convenience, but as a statement of principle. At W&L Law, instruction doesn't end at the classroom door... if a discussion is too thought-provoking to end, it will spill into the hallway, or the library, or a coffee shop downtown. We wouldn't have it any other way.



L I F E S T Y L E ▸ C O S T O F L I V I N G

We see value in taking the path less traveled. For some, W&L Law offers a respite between undergraduate life and the urban work setting that so often follows a law degree. For others, three years in Lexington is the first step on a journey dedicated to law practice in a small town. In the eclectic hills of Lexington, there is a place to learn, reflect, and reinvent one's self. "MetroLex" may be rural, but it is neither backwards nor backwoods, and it's a million miles from road rage.

Time magazine featured Lexington as one of 10 great small towns, and *Money* magazine selected it as one of the 12 best places for a summer vacation, in company with such destinations as Vancouver, San Diego, and Steamboat Springs.

Geographically, Lexington is in the lush Shenandoah Valley – a place that enjoys sunrises over the Blue Ridge Mountains and sunsets over the Alleghenies. Equidistant from New York and Atlanta, Lexington is only three hours from the Washington, D.C. area and 45 minutes from Roanoke.

Students love Lexington, whether they grew up in large cities or smaller communities. We think you will, too.

In addition to grocery chains, big box stores, and snazzy gift shops catering to the tourist trade, Lexington boasts a lively array of businesses, including:

- a sushi bar
- organic markets
- wireless coffee shops
- a chocolatier
- an ice cream shop (*homemade!*)
- numerous restaurants, cafes, pizza joints and sub shops
- a pilates studio and an athletic club
- several spas
- a shoe boutique
- an arts co-op
- a drive-in movie theater
- a regional theater
- Virginia's Horse Center

Lexington is no super-mall, and we know it. But law students can write a check without ID at most any local business. We think we got the better end of that deal.

K E I T H D U N L A P
[Class of 2007]

After receiving his Masters of Art from Columbia University, Keith Dunlap was offered a full ride to a big-city law school but found that Washington and Lee was the way to go.

“With my scholarship, I will be able to graduate with very little debt. This economic freedom will enable me to pick the job I want, not the job I need to pay off my loans. I had a full scholarship offer from a big-city school, and after I did the math, it was still less expensive to go here with a less than full scholarship.”

“It's a hard choice to move your family across the country to go to school. But I knew that W&L was a friendly place and that the administration would do what they could to make it work for us. You can't get lost in the shuffle here.”

With a dossier that includes Buffalo, New York City, and Montana, Keith and his family are the kind of folks who will make a mess of a friend's address book, but they have found the quality of life in Lexington easy to embrace.

“We rent a beautiful home in town – in another setting, we would never have so much space. My wife has a garden. The community has really reached out to my wife and my daughter and made them feel welcome.”





LEXINGTON ALMANAC

POPULATION

City	7,100
Region	34,000

ACCESS

Interstates	81 and 64
-------------	-----------

AIRPORTS

Dulles	175 mi.
Greensboro	154 mi.
Roanoke	52 mi.

DISTANCE FROM

Washington, D.C.	188 mi.
Roanoke, Va.	54 mi.
Charlottesville, Va.	69 mi.

WEATHER

Avg. Annual Precipitation	39.2 in.	
Avg. Annual Snowfall	22 in.	
Avg. Temperature	HIGH	LOW
September	78	58
November	58	37
January	44	25
March	57	35
May	76	53

TYPICAL RENT

2 BR Apartment	\$350–500
3 BR Home	\$600–800

TECHNOLOGY · LIBRARY

Wireless communications in every classroom, carrel and meeting space. High-speed dataports at each classroom seat. Missed classes can be videotaped with the push of a button. A computer lab that's scanner stocked and laser printer laden. A technology staff that's eager to help...even if it's your own laptop giving you fits. We're not committed to staying up to date with technology. We're committed to staying ahead of it.

W&L's three-story law library is the hub of the law school. Its 400,000 volumes and extensive collection of legal periodicals, combined with services such as Lexis and Westlaw, provide students with comprehensive research opportunities. Our experienced staff will help you find the information you need, no matter how esoteric.

The Washington and Lee School of Law also houses a very special research source – the complete papers of Supreme Court Justice and W&L Law alumnus Lewis F. Powell, Jr. And don't overlook our prolific faculty's own writings. You'll find their authoritative books and articles in leading law journals a particularly fertile source of research.

At W&L, advanced technology and dedicated people combine to open doors to knowledge and possibilities.





M A R Y N A T K I N
[*Clinical Professor of Law*]

Professor Mary Natkin's role is part mentor, part mediator, and part matchmaker. As director of the Black Lung Benefits Clinic at Washington and Lee, she pairs bright young law students with pneumoconiosis-stricken miners to help them seek federal disability payments under the Black Lung Benefits Act. Few private practice lawyers will touch black lung cases because they can drag on for years and the compensation is often meager compared to the effort required.

“Law students need to struggle with the awesome responsibility of what it means to be a lawyer and to represent someone,” explains Natkin. “This is exactly what we need to do every day in this profession.”

“I would define a successful student as one who develops an appreciation for the importance of facts in a case, who thinks and acts strategically and responsibly, and who learns to act as a good associate.”

Natkin says the Black Lung Clinic is one of the ways Washington and Lee Law puts students on a collision course with the real problems and issues faced by lawyers.

“Our students crave client contact, and these clients have been amazingly giving – open and welcoming. But their cases are difficult to prove, and each student struggles with an imperfect case that needs to be molded into a persuasive affirmative argument,” said Natkin. “In a traditional law school class, hypothetical examples are neat, and our doctrinal analysis lines up nicely with the point we are teaching that day. It doesn't work that way in practice. The clinic experience is more about facts and less about law.”



Maybe you think of an honor system as something that prevents a student from cheating on a test or assignment. But the honor system at Washington and Lee goes much deeper – it defines our integrity.

Students at the Law School regularly take exams without supervision. Professors feel free to assign take-home, closed-book exams. This climate of trust can only exist when honor is paramount.

Our commitment to honor goes beyond the classroom and extends to all areas of community life. Your word is your bond – to professors, to fellow students, to everyone, on campus and off.

Just as your integrity is nurtured by the honor system, you have other opportunities to develop skills that will serve you well throughout your career. Students write, edit, and publish four journals: *Capital Defense Journal*, *Environmental Law News*, *Journal of Civil Rights and Social Justice*, and the *Washington and Lee Law Review*. Exciting moot court and client counseling programs allow you to analyze legal issues, practice writing briefs, and sharpen courtroom and negotiation skills through national competitions.

You'll also have the opportunity to work with actual clients on real cases through our Legal Clinics. Our Black Lung Benefits Clinic offers help to people with black lung disease as they seek disability benefits. Our Community Legal Practice Center offers you a chance to help local residents with legal advice. At the same time, the Virginia Capital Case Clearinghouse draws national attention as its students focus on complex legal issues affecting death penalty litigation and sentencing.

Externships also provide practical experience in representing clients. The Public Prosecutors Program offers opportunities to draft indictments, prepare for trials, and handle appeals. You can work with the Legal Aid Society to meet the legal needs of low-income clients. And if you're interested in litigation, you can become a legal clerk with Virginia Circuit Court judges, a Justice of the Virginia Supreme Court, or a federal Bankruptcy Court judge.

M A R K D R U M B L

[*Class of 1975 Alumni Professor and
Director, Transnational Law Institute*]


Born in Canada. Taught at Columbia, Arkansas, and Afghan University in Pakistan. Led seminars in China and performed exchange work in Brazil. Worked at a Wall Street firm, and served as a clerk to a Justice of the Supreme Court of Canada. Practiced as a defense lawyer in the Rwandan genocide trials. A law student could go around the world and never find a professor with such a diversity of experience. And at W&L Law, you won't just hear "war stories" delivered from a podium, you'll get to know the man.

"With our foreign exchange programs, specialized courses in international and comparative law, vibrant student associations, and large number of celebrated speakers that come to campus, our global legal studies curriculum is exciting and rapidly growing," said Drumbl.



“W&L Law shares what I found to be the best element of each institution where I have been a part of the faculty: It commits itself to rigorous scholarship and exciting internationalism; it prides itself on faculty and student collegiality; and it welcomes and nourishes eager students with a real thirst for learning.”

HISTORY · DIVERSITY



Washington and Lee University traces its origins back to 1749, making it the ninth-oldest college in America. The law school was established independently in 1849 and has provided a pathway to the law for generation after generation of superior students, among them four who went on to serve as Associate Justices of the United States Supreme Court, six who presided over the American Bar Association, and countless other dedicated practitioners who have changed the lives of the clients they serve.

Despite our historic legacy, the true focus of any institution of higher learning is on the present and future. One tangible reflection of that commitment is found in our rich, eclectic, diverse, and extremely bright student body.

Another is our continually evolving curriculum.

Students who come to W&L Law concerned about memorizing facts go out into the world understanding that those facts are just the building blocks for deeper analytical thinking. Our long history allows us to make that happen every way possible.

The Frances Lewis Law Center helps foster the intellectual life of the School of Law by sponsoring programs that challenge faculty, students and the University community to expand their understanding of the law and its implications for society. Scholars in Residence teach seminars on provocative legal subjects, and public lectures feature distinguished scholars addressing the impact of law on society.

W&L established a Center for Law and History in 2003, and has similar cross-disciplinary innovations under consideration. With Virginia Commonwealth University's nationally recognized School of Allied Health Professions, we offer a dual-degree program through which students can earn a JD and an MHA. Additional dual-degree programs are on the horizon.





JENNIFER WILLIAMS
[Class of 2005]

When Jennifer Williams took the cross-country trek from the left coast to Lexington, she was unsure of what to expect.

“Being an African-American woman from California, I have enjoyed a great diversity of cultures and have been exposed to liberal points of view,” Jennifer noted.

Jennifer says that while Lexington is certainly not the West Coast, her time at W&L has been anything but limiting.

“My viewpoints are not at all the mainstream,” said Jennifer,” but people here are willing to hear what you have to say. Law school fosters debate, and despite how unpopular a point of view may be, it is heard with civility and respect.”

“I’ve felt very comfortable as a black woman in Lexington and at W&L. I’ve had nothing but positive experiences. Though Lexington is a small town, the people are highly educated; there’s more of a cosmopolitan flavor to the community and the law school than your typical Southern town.”

Dorothy Brown
Professor of Law

A L U M N I

Today, Washington and Lee School of Law has distinguished alumni throughout the country, many of whom volunteer to help graduates find suitable employment after graduation.

Alumni eagerly anticipate the opportunity to help you, whether it's speaking to an employer on your behalf or advising you on opportunities in cities across the country.

Our alumni include Supreme Court, federal, and state judges. They hold government positions like Chief Council to the Department of Homeland Security, and work in federal agencies like the U.S. Commission on

Civil Rights, the Securities and Exchange Commission, and the Department of Justice. They have been elected to the United States Congress and served as president of important legal organizations like the American Bar Association. And of course, they practice law at leading law firms throughout the country.

Our alumni work hand in hand with our Career Services Office to help you find just the right position. Career Services offers a variety of workshops each year to help you become an attractive candidate for employment. The staff will help you with interview skills, resumé preparation, and job search strategy. And they sponsor recruiting programs on campus and at a satellite location in Charlottesville, as well as interview programs throughout the country.

D A R R Y L H A R R I S [*Class of 2005*]

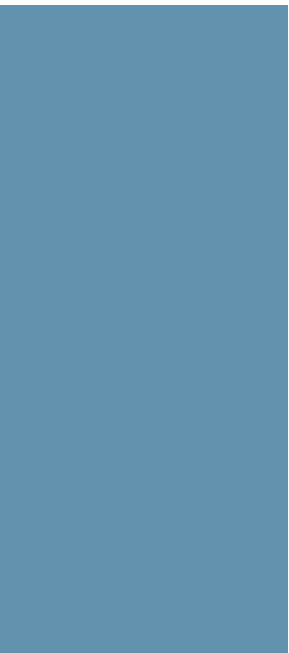
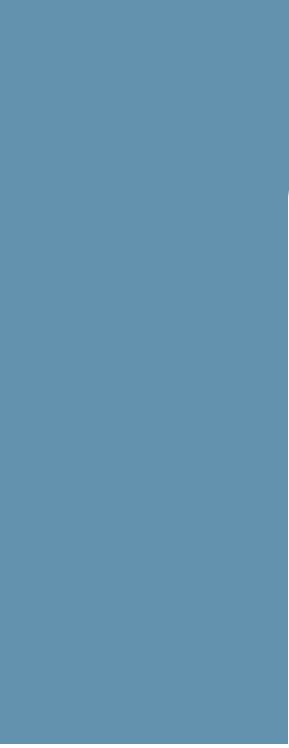
Before he finished his law degree, Darryl Harris was already lining up clients as a sports agent and head of his own company, Sports Management Group, LLC.

A former football player, Darryl hadn't made Washington and Lee a part of his game plan, but the people won him over. He credits his associations and the friends he's made here for helping him grow both personally and academically.





A college campus is a place of study, community, and traditions. At Washington and Lee, our campus encompasses all these and more. Considered by many to be one of the most beautiful in the country, it offers a sense of the history and commitment to excellence that characterize the Law School. The centerpiece is the colonnade, a historic and beautiful row of buildings with impressive white columns that form the backbone of the campus. “I’ve been here for more than 20 years,” says Professor Brian Murchison, “but I still pause from time to time just to admire its stately presence. Our graduates are spread out across the country in the leading law firms and in government positions. But when they return to Lexington for alumni weekend and see the colonnade, they know they’re back home.”



CURRICULUM

Some entering students come in thinking their first year of classes is like some ritual initiation they must endure. That's not the W&L way. All first-year students take the same classes – American Public Law Process, Civil Procedure I and II, Criminal Law, Criminal Procedure, Contracts, Legal Writing, Property, and Torts. While you'll be challenged to change the way you think, this is law school, not boot camp. It is a growing experience to be enjoyed, not endured.

After your first year, there are three mandatory requirements: Constitutional Law, a professional responsibility course, and a writing requirement. After that, the choices are yours. We offer 120 electives, letting you customize and focus your curriculum on the areas of law where you intend to practice.

You'll complete an upperclass writing assignment under the supervision of a faculty member. You'll go through a number of drafts until it's right – just as you will be expected to do when you're in practice.

Your classes will be challenging, stimulating, and fun. You'll work hard, but you'll learn the law. You'll be ready to pass the bar and begin making a name for yourself.

BRETT TWITTY
[*Class of 2006*]

What would persuade an audiophile DJ with a large university background to give W&L Law and small-town life a spin? "After spending my undergraduate years at a large state institution, I wanted a more personal and student-centric educational experience," said Brett.

"I wanted to do more than simply go to class, read, sleep, repeat. I wanted to be involved."

"W&L's intimacy provided me an unparalleled opportunity to be an active participant in both the classroom and the extracurricular aspects of my legal education," reported this Student Bar Association president. "My classmates have profoundly and positively affected my life. I feel this is a compliment that can only be reserved for a select few law schools, and W&L is such a school."

REQUIRED COURSES

FIRST YEAR

American Public Law Process

An introduction to the legal framework of American constitutional and administrative government.

Civil Procedure I and II

The law governing the process of civil litigation, from commencement of the action through challenges to the judgment.

Contracts

The nature of exchange relationships in our legal system, including remedies for reinforcing exchange relationships, concepts and techniques relating to continuing exchange relationships, social control and utilization of contracts, and the contract as a form of economic wealth and property.

Criminal Law

A study of the ways in which society defines conduct and persons as criminal.

Criminal Procedure

The adjudication process applied in criminal cases from arrest through verdict.

Legal Writing

Legal research and writing assignments designed to sharpen writing and analytical skills and to familiarize students with law library resources and research methods.

Property

An introduction to the law of property with attention to personal property, the law of estates in land, landlord-tenant law, conveyancing, and non-possessory interests in real property.

Torts I

The legal protection afforded in civil proceedings against interference by others with one's person, property, and intangible interests.

SECOND AND THIRD YEAR REQUIRED COURSES

Constitutional Law

Federalism and interstate relationships with particular reference to the Commerce Clause, civil liberties as defined by the Bill of Rights, and protection of civil rights.

Professional Responsibility Requirement

To fulfill the ABA professional responsibility requirement, a student must take one of the four legal ethics courses: Ethical Issues in Civil Litigation, Ethical Problems in the Practice of Criminal Law Seminar, Legal Ethics Seminar, or Professional Responsibility.

ELECTIVE COURSES

Abortion Controversy Seminar
 Accounting and Finance for Lawyers
 Administrative State and the Constitution
 Advanced Criminal Procedure Seminar
 Advanced Family Law
 Advanced Law and Economics
 Advanced Legal Clinic
 Advanced Negotiation Strategies and Skills
 Advanced Problems in Administrative Law
 Advanced Property
 Advanced Topics in Environmental
 Law Seminar
 American Legal History I
 American legal History II
 Animal Law
 Antitrust Law
 Bankruptcy
 Bioethics Seminar
 Business Planning
 Capital Punishment Seminar
 Child Abuse and Neglect Seminar
 Children, Culture and Violence Seminar
 Close Business Arrangements
 Comparative Health Law Seminar
 Comparative Legal Systems
 Comparative Public and Constitutional Law
 Complex Civil Litigation
 Conflict of Laws
 Constitutional Criminal Procedure
 Constitutional Law Seminar
 Consumer Bankruptcy
 Contemporary Problems In Law
 and Journalism
 Contemporary Problems in Law and
 the Political Process
 Copyright Law
 Corporate Finance
 Corporate Income Tax
 Corporate Reorganization
 Critical Race Theory Seminar
 The Death Penalty: A Survey
 Decedents' Estates and Trusts I
 Decedents' Estates and Trusts II
 Development of the Western Legal Tradition
 e-Commerce
 Elderlaw
 Employee Benefit Law
 Employment Practices
 English Legal History
 Entertainment and Sports Law I
 Entertainment Law II
 Environmental Law
 Environmental Law Seminar
 Estate Planning
 Ethical Problems in the Practice of
 Criminal Law Seminar
 Evidence
 Family Law
 Federal Civil Practice
 Federal Civil Rights
 Federal Energy Regulation
 Federal Income Taxation of Individuals
 Federal Jurisdiction and Procedure
 Federalist Papers
 Fiduciary Administration
 First Amendment

Foreign Relations Law of the United States
 Future Interests
 Gender, Law, and Culture
 Gender, Sexuality, and the Law Seminar
 Global Environmental Governance:
 Law, Economics, and Policy
 Government Contract Law
 Health Care Quality Regulation
 Health Law Organization and Finance
 Hindu Law in Theory and Practice
 Independent Research Projects
 and Tutorials
 Injunctions
 Insurance
 Intellectual Property Transactions
 International and Comparative Family Law
 International Business Transactions
 International Commercial Arbitration
 International Economic Regulation
 and Trade Law
 International Environmental Law
 International Income Tax
 International Intellectual Property
 International Law
 International Law of Human Rights Seminar
 International Law Practicum
 International Trade and Economic
 Relations Law
 Internet Law
 Introduction to United States Law
 Introduction to European Community Law
 Jurisprudence Seminar
 Jury Advocacy
 Labor Law
 Labor and Employment Arbitration
 Land Use Regulation
 Law and Economics
 Law and Education
 Law and Social Science Seminar
 Law, Litigation, and Democracy in
 Ancient Greece
 Legal Clinic
 Legal Ethics Seminar
 Legislation
 Litigation Planning
 Local Government
 Mass Media Law
 Mass Violence, International Law, and
 Human Rights Seminar
 Medical Technology and the Law
 Natural Resources Law
 Negotiation and Mediation
 Non-Profit Organizations
 North American Free Trade Agreement
 Patent Law
 Payment Systems
 Poverty Seminar
 Pretrial Advocacy
 Problems in Media Law
 Professional Negligence Seminar
 Professional Responsibility
 Property and the Constitution
 Public Welfare Law
 Publicly Held Businesses
 Race, Crime, and Criminal Procedure
 Radical Legal Thought

Real Estate Transactions
 Remedies
 Remedies Seminar
 Sales Law
 Secured Transactions
 Securities Regulation
 Special Education Law
 State and Local Taxation
 Supreme Court Practice
 Tax Systems Seminar: Legislative Process
 and Statutory Interpretation
 Taxation of Gifts, Trusts, and Estates
 Taxation of Mergers & Acquisitions
 Taxation of Partnerships and Limited
 Liability Companies (LLCs)
 Torts II: Product Liability
 Torts II: Relational Injuries
 Trademarks
 Trial Advocacy
 Trial Advocacy Strategies
 U.S. Intelligence Law
 Virginia Capital Case Clearinghouse
 Virginia Law and Procedure
 White Collar Crime
 Wrongful Convictions

OTHER PROGRAMS FOR ACADEMIC CREDIT

CLINICS AND EXTERNSHIPS:

- Advanced Legal Clinic
- Black Lung Benefits Clinic
- Community Legal Practice Center
- General Externship Program
- Judicial Clerkship Program
- Public Prosecutor Program
- Summer Internship Program
- Tax Clinic
- Virginia Capital Case Clearinghouse

JOURNALS:

- *Capital Defense Journal*
- *Environmental Law News*
- *Journal of Civil Rights and Social Justice*
- *Washington and Lee Law Review*

RECENT COMPETITIONS:

- ABA Client Counseling Competition
- ABA Criminal Justice Mock Trial Competition
- ABA Mediation Competition
- ABA Negotiation Competition
- Appellate Advocacy Competitions
- ATLA Mock Trial Competition
- Holderness/William and Mary Moot Court Competition
- Jessup International Moot Court Competition
- J. Braxton Craven Moot Court Competition
- National Appellate Advocacy Competition
- National First Amendment Moot Court Competition
- National Mock Trial Competition
- National Moot Court Competition



ROBIN
FRETWELL WILSON
[Professor of Law]

Professor Robin Fretwell Wilson received her J.D. and B.A. degrees from the University of Virginia where, at the School of Law, she served on the Editorial Board of the Virginia Law Review. Before entering practice, she clerked for the United States Court of Appeals for the Fifth Circuit. A specialist in Family Law and Health Law, her research and teaching interests also include Insurance and Biomedical Ethics.

Professor Wilson was awarded a 2007 “citizen lawmaker” award for her work in connection with legislation that prohibits the little-known but common practice at teaching hospitals of allowing medical students to perform pelvic examinations on anesthetized patients without explicit consent. She plans to involve W&L Law students in a project addressing the complexities and ambiguities of hospital consent forms and providing pro bono advice to hospital counsel. “This is what we should be trying to achieve in the law,” says Wilson. “Rather than simply writing articles that are critical of a practice, we should be working to translate that critique into real reform in society.”

CLASS COMPOSITION

Clearly, we seek diversity in our student body. We're pleased that our students boast a wide variety of undergraduate majors and graduate disciplines, and have a wealth of employment experiences, often including work for a year or more between college and law school.

For all this diversity, there are some things that are common to the group. Our students are high achievers with vision and great expectations for themselves, their teachers, and their future.

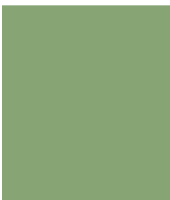
KAI - TING YANG [Class of 2007]

When it came to law school, Kai-Ting Yang was torn between a big city institution and W&L. That's a choice a lot of our students have to make. And it's nearly unanimous that they never regret coming to W&L.

"Lexington has proven to be exciting in its own way," said Kai-Ting. "For the first month I was here, I went running in the early mornings around campus. I'd run by rivers, ponds with white geese, and so many trees. I kept thinking how glad I was I had chosen all this instead of a city. I love the outdoors, and this place is just gorgeous."

"I'm incredibly happy here. Imagine that. Being incredibly happy during your first year of law school."

Kai-Ting Yang was born in Taiwan, raised in Saudi Arabia (where she still returns frequently), and attended high school in the U.S. before attending the University of Virginia. She says she hopes to travel in her career. Odds are pretty good that's going to work out.





QUICK LOOK [Class of 2009]

CLASS SIZE 126

MEDIAN LSAT 166

75th Percentile 167

25th Percentile 163

MEDIAN

UNDERGRADUATE GPA 3.61

75th Percentile 3.73

25th Percentile 3.29

AGE RANGE 20-47

MINORITY 20

STUDENTS CAME FROM

Colleges and Universities 81

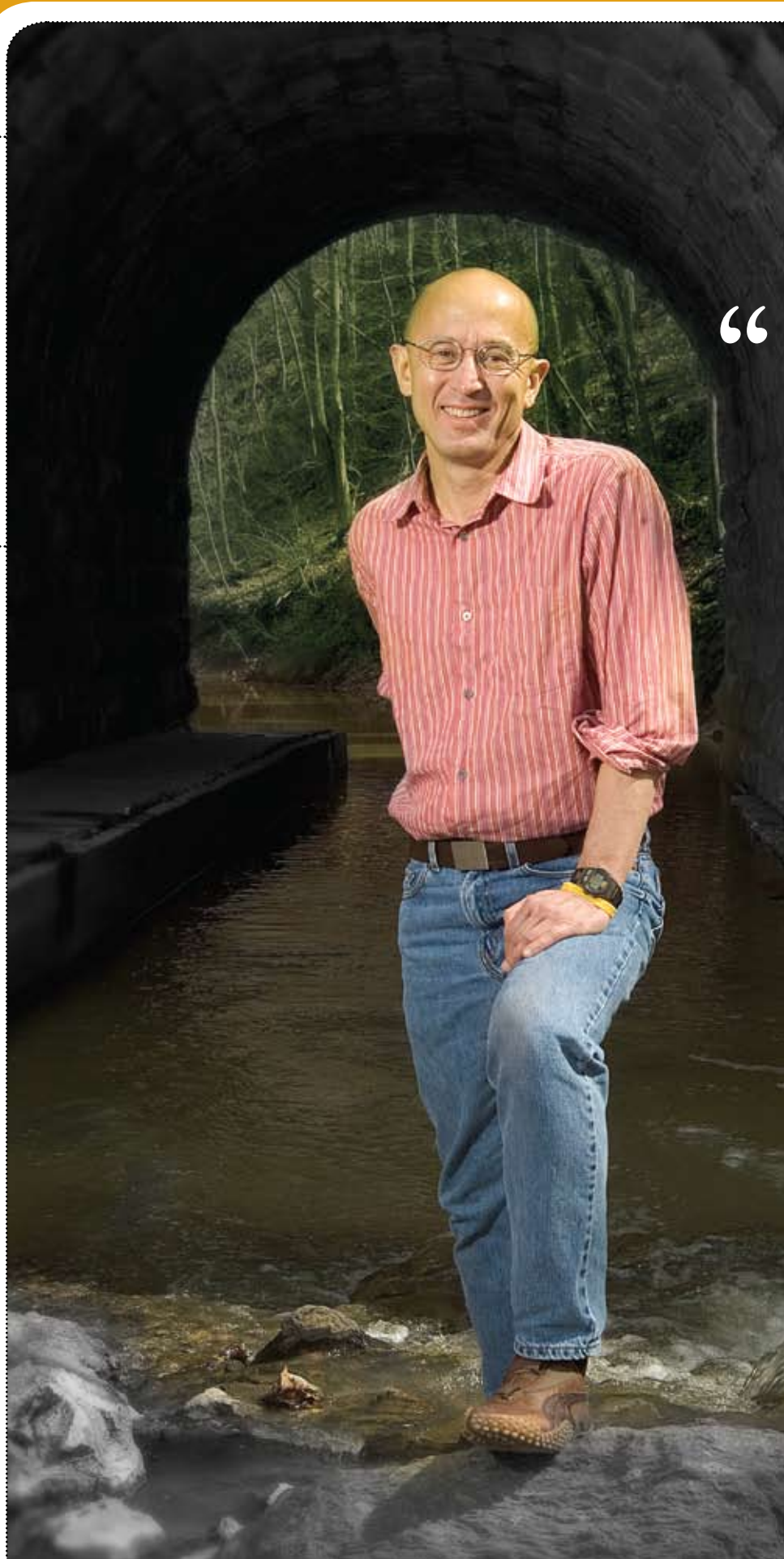
States 34

Foreign Countries 4



“I love publishing, because I have strong opinions. But above all else, this is a teaching faculty. And honestly, teaching here is a lot of fun. Our worst students are still very good, the atmosphere is relaxed, and you can teach at a high level and know they’ll keep up with you.”

Timothy Jost
Robert L. Willett Family
Professor of Law





DAVID MILLON

[Former Associate Dean for Academic Affairs and
J.B. Stombock Professor of Law]

W

hat's special about W&L is the genuine focus on the students. The faculty devotes a great deal of time to teaching and mentoring, inside and outside the classroom. At the same time, we are ambitious about contributing to national and international conversations about pressing legal issues."

Not every associate dean looks forward to getting back to the classroom to be closer to the students. On the other hand, David Millon is not an ordinary associate dean. With a resumé that includes teaching at leading institutions in the U.S. and England and published work as varied as a critique of the Williams Act to an examination of the causes of the Enron debacle, Millon finds the allure of the classroom impossible to resist.

"I was privileged to work for several years as associate dean but always looked forward to returning to full-time teaching and research," said Millon. "Those activities are what lured me into an academic career to begin with. I miss the classroom, and I'm eager to get back to large research projects in corporate law and medieval English legal history."





DEAN'S PERSPECTIVE

As a single footstep will not make a path on the earth, so a single thought will not make a pathway in the mind. To make a deep physical path, we walk again and again. To make a deep mental path, we must think over and over the kinds of thoughts we wish to dominate our lives. —Henry David Thoreau

A These poetic words are worth contemplating as you consider the path before you at this critical juncture in your life. The Washington and Lee School of Law sits in a physical setting of extraordinary beauty, surrounded by literal paths through forest and mountains that invite moods of reflection and peace. Yet the life of the law, and the process of learning to “think like a lawyer,” will require your engagement in thinking over and over the kinds of thoughts that we hope will dominate your lives as lawyers. At Washington and Lee we will encourage you to absorb the great traditions of the legal profession, to develop professional judgment, human sensitivity and compassion, ethical groundings, and a calm civility of steady temperament in the midst of conflict. These are the deep mental paths of the great legal mind.

We are in an epoch of rapid and volatile societal change, placing great stress on our laws, our legal systems, and our profession. Across the globe, societies labor to give meaning and substance to the ideal of the rule of law. We struggle over issues of diversity, equality, religious liberty, independent courts, transparent public institutions, and democratic participation. The practice of law is increasingly complex, competitive, trans-jurisdictional, interwoven with the globalization of business and the breakneck pace of invention in science, technology, and modes of communication. Society looks to universities for objectivity and intellectual rigor in coping with these changes, and it looks to law schools for creativity and leadership in teaching, scholarship, and service to enrich our systems of justice and to safeguard the highest traditions of the profession.

Washington and Lee offers something distinctive. Our student body is the smallest of the nation's great law schools. Our strong student-faculty ratio, our commitment to personal interaction among faculty and students, the small size of our classes, our creative curricular design—which emphasizes an integrated approach to learning that combines the study of theory, doctrine, practice skills, and the cultivation of that ineffable quality of “good legal judgment” that is so vital to the successful practice of law—all combine to make the Washington and Lee experience unique, and the Washington and Lee lawyer special.

Our community transcends geography and generations. We have a superb faculty, experienced scholars and lawyers, who live in the fast-lanes of American and international law, participating through teaching, scholarship, and public service to the advancement of our systems of justice. We have dedicated staff, who work conscientiously and tirelessly to support our mission. We have a network of highly accomplished alumni. Above all, we have a vibrant, intellectually curious student body, engaged in the exciting process of creating new pathways. I hope you'll join us.

Rodney A. Smolla, *Dean and Professor of Law*

LOCATION | DRIVING TIME



Washington and Lee University School of Law is equidistant from Atlanta and New York City.



Washington and Lee University School of Law is 3 hours from Washington DC and 1 1/4 hours from Charlottesville, Virginia.

Andrea Hilton Howe
Director of Admissions

Sarah Hughes
Assistant Director of Admissions

*For application materials
or more information,
visit our website:*

www.law.wlu.edu/admissions

Washington and Lee University
School of Law
Sydney Lewis Hall, Room 508
Lexington, Virginia 24450
(540) 458-8503
www.law.wlu.edu

email us at lawadm@wlu.edu

To learn more about Lexington,
visit www.lexingtonvirginia.com

NON-DISCRIMINATION STATEMENT

Washington and Lee University is a community based on trust and respect for others. The quality of its life, academic and social, is shaped by the guiding principle of civility, and every member of the community is entitled to expect civil behavior from all other members. Students, faculty, and staff have the right to be free from prohibited discrimination, harassment, and sexual misconduct within the University community. Specifically, the University prohibits discrimination, including harassment, on the basis of race, color, religion, national or ethnic origin, sex, sexual orientation, age, disability, or veteran's status in its educational programs and activities and with regard to employment.

P A T H W A Y S

